

CERTIFICATE OF LOCATION OF GOVERNMENT CORNER

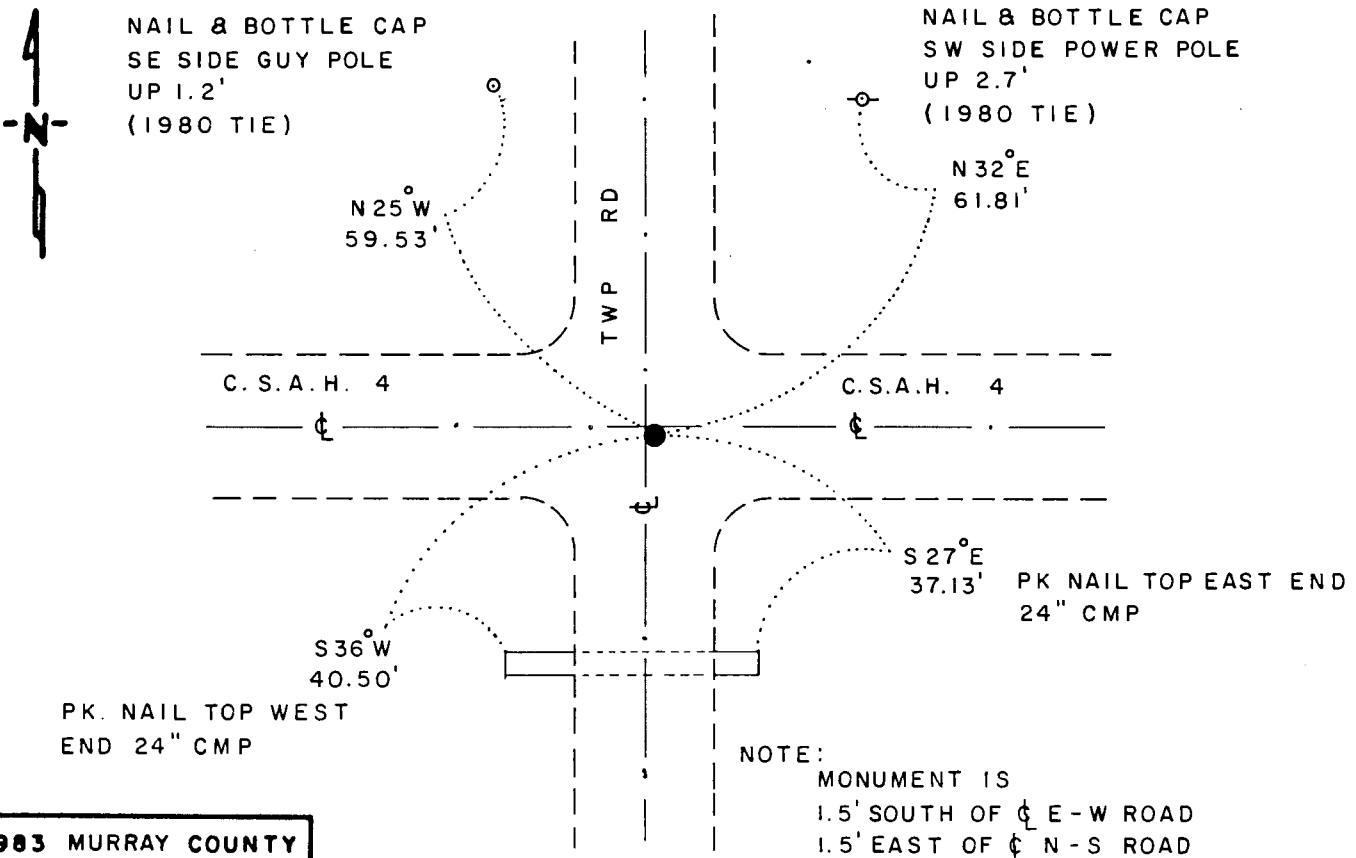
NORTHEAST Corner of Section 16, Township 105 N, Range 41 W, 5th P.M.

STATE OF MINNESOTA, County of MURRAY

At the corner location shown on the sketch

- On 3-22-90 found a 5/8" x 24" REBAR WITH PLASTIC RLS CAP
DATE # 12967, DOWN "8"
- left monument as found, lowered monument, removed monument (explain)
- On 3-22-90 placed a 3/4" x 24" REBAR WITH ALUMINUM CAP STAMPED
DATE "DNR SURVEY MARKER", DOWN 0.4'

SKETCH OF REFERENCE TIES



NOTE:
MONUMENT IS
1.5' SOUTH OF E-W ROAD
1.5' EAST OF N-S ROAD

1983 MURRAY COUNTY
COORDINATE SYSTEM
N = 121,281.391
E = 500,710.611

BEARINGS OBSERVED WITH COMPASS

Statement of evidence relative to this corner location is on back of page

J.B.M. 4-25-90
WMA 1488

I hereby certify that this document and the data contained herein was prepared by me or under my direct supervision.

Lowell R. Pommeroy Jr. 5-10-90
SIGNATURE DATE

Registration No. 17005

- Land Surveyor, Professional Engineer
- County Surveyor, County Engineer

OFFICE OF THE COUNTY RECORDER
County of _____

I hereby certify that this document was filed in the Co. Recorders office at _____ M. on the _____ day of MAY 16 1990 A.D., 19 _____

County Recorder James V. Johnson

By _____, Deputy

DOCUMENT NO. _____

Northeast Corner of Section 16, Township 105 North, Range 41 West

The DNR Bureau of Engineering contacted the following for survey information:

Secretary of State's Office
Murray County Recorder's Office
Murray County Highway Engineer's Office
Bell Surveying, Inc., of Worthington
Madsen Land Surveying of Fairmont

- 1861 U.S. General Land Office notes obtained from the Secretary of State's Office show corner marked with a post in a mound with trench and pits as per instructions.
- 1898 Surveyor's Record Book A, page 76, obtained from the County Recorder's Office contains a survey by J. W. Woolstencroft. Survey shows a stone in mound at corner but does not indicate if found or set.
- 1901 Surveyor's Record Book A, pages 144 and 154, obtained from the County Recorder's Office contain a survey by J. W. Woolstencroft. Survey shows a stone in a mound at corner but does not indicate if found or set.
- 1936 Surveyor's Record Book obtained from the County Highway Engineer's Office shows rock at corner but does not indicate if found or set. The following ties are shown to corner:
tack in corner fence post, northwest, 47.2 feet
tack in corner fence post, southwest, 43.5 feet
tack in corner fence post, southeast, 35.1 feet
tack in corner fence post, northeast, 38.2 feet
- 1949 Construction Plan Sheet Number 3 of 19 for State Aid Road 10, now County State Aide Highway 4, obtained from the County Highway Engineer's Office shows a monument at corner but does not give a description of it. The corner is shown:
at Station 52+87.1
at the intersection of roads north, south, east and west
2641.1 feet from the north quarter corner of Section 16
- No Date Surveyor's Record Book obtained from the County Highway Engineer's Office shows a 2" by 2" hub at corner but does not indicate if found or set. The following ties are shown to corner:
bottle cap in guy pole, northwest, 59.8 feet
bottle cap in power pole, northeast, 61.8 feet (1956)
- 1980 A Certificate of Survey and field notes obtained from Madsen Land Surveying, surveyed by Gary Martin, RLS #12967, show that a 1/2 inch rebar was set for corner in place of hubs. The following ties are shown to corner:
2643.15 feet from the north quarter corner of Section 16
1.0 feet south of the center line of an east-west road
2.0 feet east of the center line of a road south
2.0 feet east of the southerly extension of the center line of a road north
nail and bottle cap in guy pole, northwest, 59.55 feet
nail and bottle cap in power pole, northeast, 61.70 feet
- 1990 March, DNR Bureau of Engineering found a 5/8 inch diameter by 24 inch long rebar with a plastic cap stamped RLS #12967 at corner. Removed the rebar and probed beneath it to a depth of 4 feet in search of a stone but found nothing. Discarded the found rebar and set a DNR Survey Marker in its place. Searched for and found record ties as shown on sketch of reference ties. The rebar was found to be:
1.5 feet south of the centerline of an east-west road
1.5 feet east of the centerline of a north-south road
2642.91 feet from the north quarter corner of Section 16

Analysis of the above information led the DNR Bureau of Engineering to conclude that the found rebar marks the location of the corner.